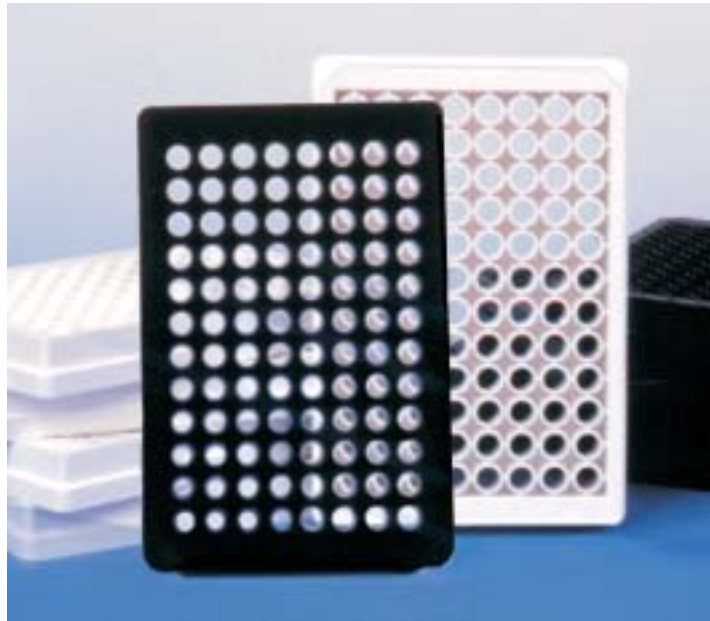




## NUNC™ 96-well CC<sup>2</sup> Coverglass Optical Bottom Plates



The Nunc™ 96 well CC<sup>2</sup> Coverglass Bottom Plates have a #1.5 coverglass that has been chemically modified to closely mimic a biological surface similar to Poly-Lysine. This surface modification offers a superior substrate for attachment and growth of fastidious cells. The coverglass base allows the distinct advantage of visualization of well contents and enhanced sensitivity with Confocal Image Analysis and Inverted Microscopy.

- CC<sup>2</sup> Surface Treatment
  - Improved substrate for fastidious cells like neuronal, cancer, transfected, primary, etc.
- Low Fluorescent Background
  - Ensures accurate results due to higher signal-to-noise ratios
- Automation System Compatibility
  - Suitable for use with robotics and automated liquid handling systems
- Optimal Well Readability
  - Clear bottom of the wells ensures readability by Inverted Microscopy and Confocal Imaging Analysis such as Laser Induced Fluorescence (LIF), Fluorescence Correlation Spectroscopy (FCS), and Fluorescence Polarization (FP)

# NUNC CC<sup>2</sup> Coverglass Optical Bottom Plates Available in:

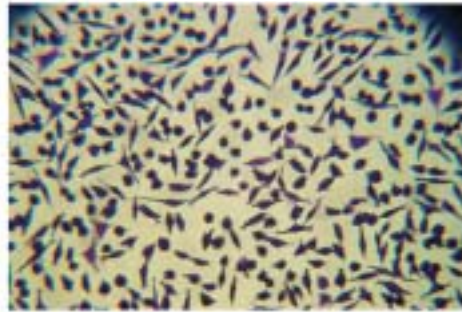
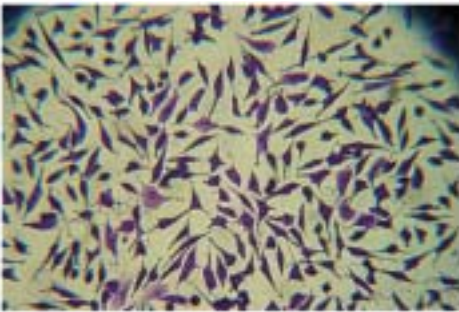
- 96 well formats
- Black or white upper structures
- CC<sup>2</sup> surface treatment same as Lab-Tek II® CC<sup>2</sup> Chamber Slides
- #1.5 coverglass (0.16-0.19 mm thickness)
- Sterile with lids

96 Well Optical Bottom Plate		
NUNC Cat. No.	Description	Units/Case
160376	Black upper structure, CC <sup>2</sup> Treated Coverglass base, Sterile with lid, for Cell Culture	6/30
160377	White upper structure, CC <sup>2</sup> Treated Coverglass base, Sterile with lid, for Cell Culture	6/30

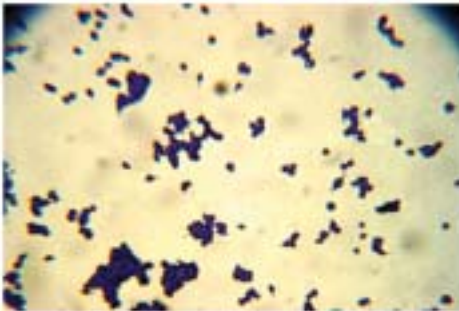
CC<sup>2</sup> Treated Coverglass

L929

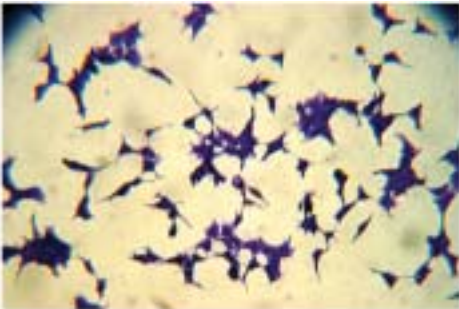
Coverglass



PC12



HEL293



The cell performance test compares the cell adhesion and morphology of cell lines between CC<sup>2</sup> coated Coverglass Bottom Plates and regular Coverglass Bottom Plates. Results showed L929 favored CC<sup>2</sup> over regular Coverglass Bottom Plates. Two cell lines; PC12 and HEL293, grew only on CC<sup>2</sup> Coverglass Bottom Plates. See image at left.



Nalge Nunc International • USA • Tel +1 585 586 8800 • [nnitech@nalgenunc.com](mailto:nnitech@nalgenunc.com) • [www.nuncbrand.com](http://www.nuncbrand.com)  
 Nunc A/S • Denmark • Tel +45 4631 2000 • [infocety@nunc.dk](mailto:infocety@nunc.dk) • [www.nuncbrand.com](http://www.nuncbrand.com)  
 Nunc GmbH & Co. KG • Germany • Tel +49 611 18674-0 • [nunc@nunc.de](mailto:nunc@nunc.de) • [www.nunc.de](http://www.nunc.de)  
 Nalge Nunc International KK • Japan • Tel +81 3381 63355 • [info@nalgenunc.co.jp](mailto:info@nalgenunc.co.jp) • [www.nalgenunc.co.jp](http://www.nalgenunc.co.jp)



FM 31464

ISO 9001  
Certified

[www.nuncbrand.com](http://www.nuncbrand.com)

